



## REGIONAL SPECIALISED METEOROLOGICAL CENTRE-TROPICAL CYCLONES, NEW DELHI TROPICAL WEATHER OUTLOOK

### DEMS-RSMC TROPICAL CYCLONES NEW DELHI DATED 21.01.2024

**TROPICAL WEATHER OUTLOOK FOR NORTH INDIAN OCEAN (THE BAY OF BENGAL AND THE ARABIAN SEA) VALID FOR NEXT 168 HOURS ISSUED AT 0600 UTC OF 21.01.2024 BASED ON 0300 UTC OF 21.01.2024.**

#### BAY OF BENGAL:

SCATTERED LOW AND MEDIUM CLOUDS WITH EMBEDDED ISOLATED WEAK TO MODERATE CONVECTION LAY OVER SOUTHEAST BAY OF BENGAL & SOUTH ANDAMAN SEA.

#### \*PROBABILITY OF CYCLOGENESIS (FORMATION OF DEPRESSION) DURING NEXT 168 HRS:

| 24 HOURS | 24-48 HOURS | 48-72 HOURS | 72-96 HOURS | 96-120 HOURS | 120-144 HOURS | 144-168 HOURS |
|----------|-------------|-------------|-------------|--------------|---------------|---------------|
| NIL      | NIL         | NIL         | NIL         | NIL          | NIL           | NIL           |

\*NOTE: EVERY 24HR FORECAST IS VALID UPTO 0300 UTC (0830 IST) OF NEXT DAY

#### ARABIAN SEA:

SCATTERED LOW AND MEDIUM CLOUDS WITH EMBEDDED ISOLATED MODERATE TO INTENSE CONVECTION LAY OVER SOUTHCENTRAL ARABIAN SEA & COMORIN AREA. SCATTERED LOW AND MEDIUM CLOUDS LAY OVER NORTH ARABIAN SEA.

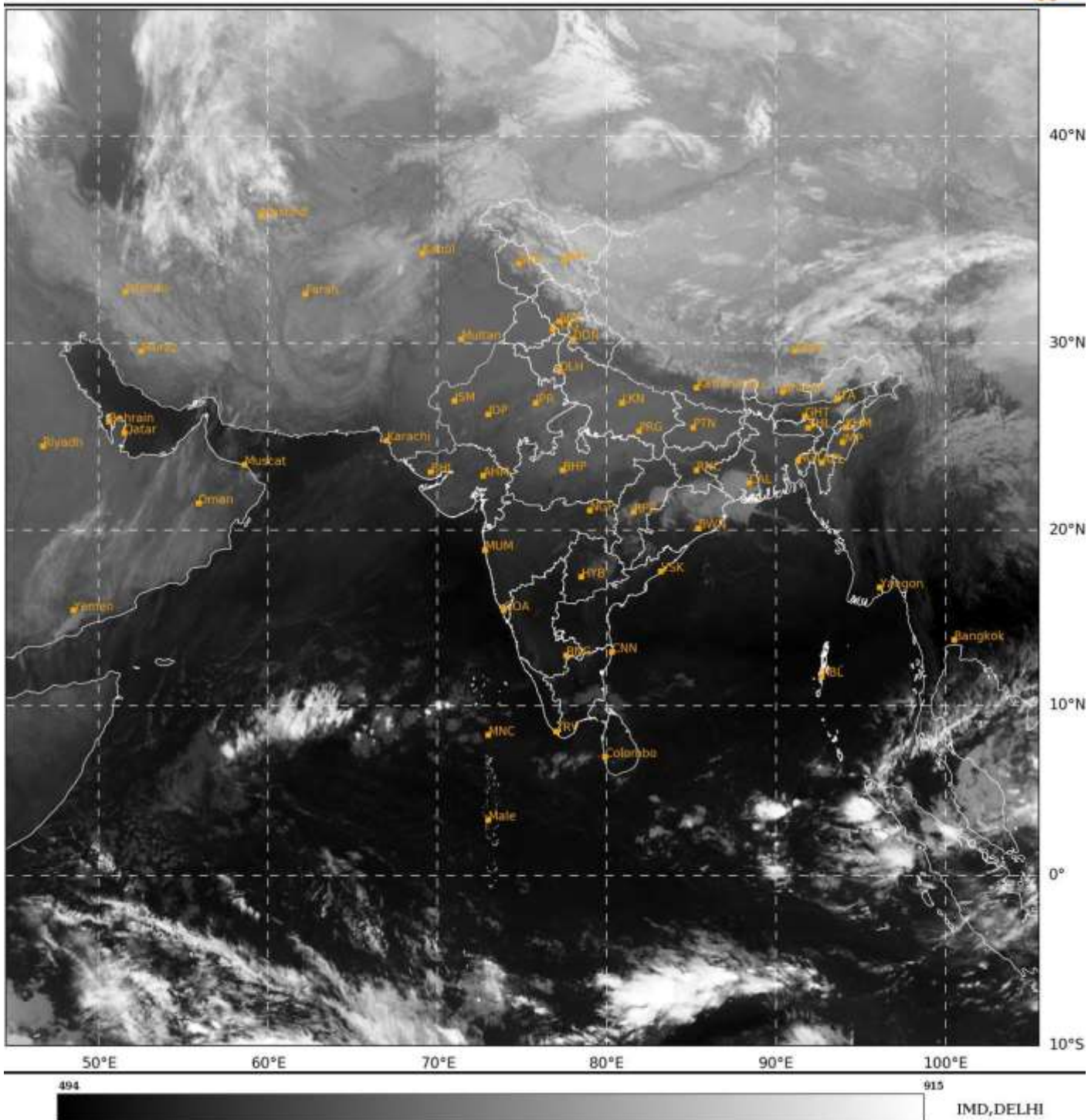
#### \*PROBABILITY OF CYCLOGENESIS (FORMATION OF DEPRESSION) DURING NEXT 168 HRS:

| 24 HOURS | 24-48 HOURS | 48-72 HOURS | 72-96 HOURS | 96-120 HOURS | 120-144 HOURS | 144-168 HOURS |
|----------|-------------|-------------|-------------|--------------|---------------|---------------|
| NIL      | NIL         | NIL         | NIL         | NIL          | NIL           | NIL           |

\*NOTE: EVERY 24HR FORECAST IS VALID UPTO 0300 UTC (0830 IST) OF NEXT DAY

SAT : INSAT-3D IMG  
 IMG\_TIR1 10.8 um  
 LIC Mercator

21-01-2024/(0300 to 0327) GMT  
 21-01-2024/(0830 to 0857) IST



Cloud distribution: (a) Isolated: <25%, Scattered:25-50%, Broken: 51-75%, Solid:>75%, Convection Intensity: (a) Weak: Cloud Top Temperature (CTT) >-25°C, (b) Moderate: CTT: - 25°C to -40°C, (c) Intense: CTT: - 41°C to -70°C and (d) Very Intense: : Less than -70°C  
 PROBABILITY OF CYCLOGENESIS (FORMATION OF DEPRESSION):NIL: 0%, LOW: 1-33%, , MODERATE: 34-66% AND HIGH: 67-100%  
 This is a guidance Bulletin for WMO/ESCAP Panel Member countries. Visit respective National websites for Country specific Bulletins